

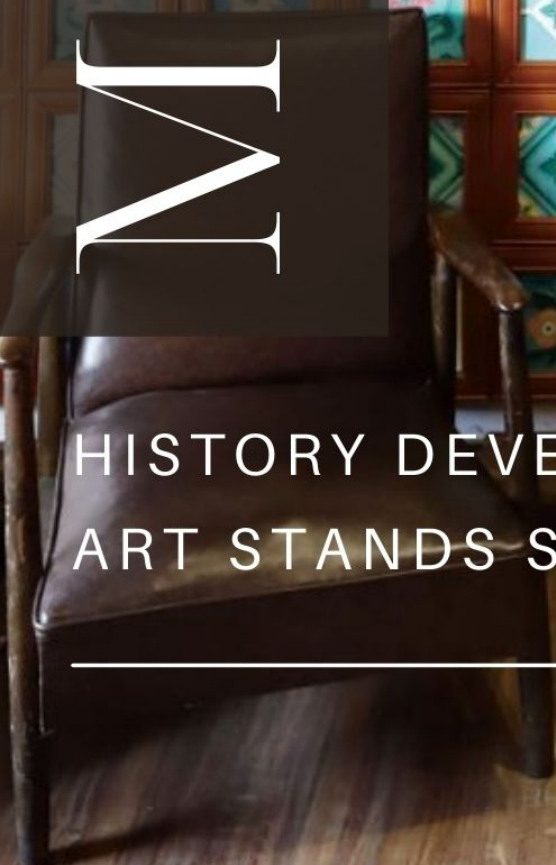
*Chettinad Tiles*  
Infinite Designs

# MAJOLICA



HISTORY DEVELOPS BUT  
ART STANDS STILL

---



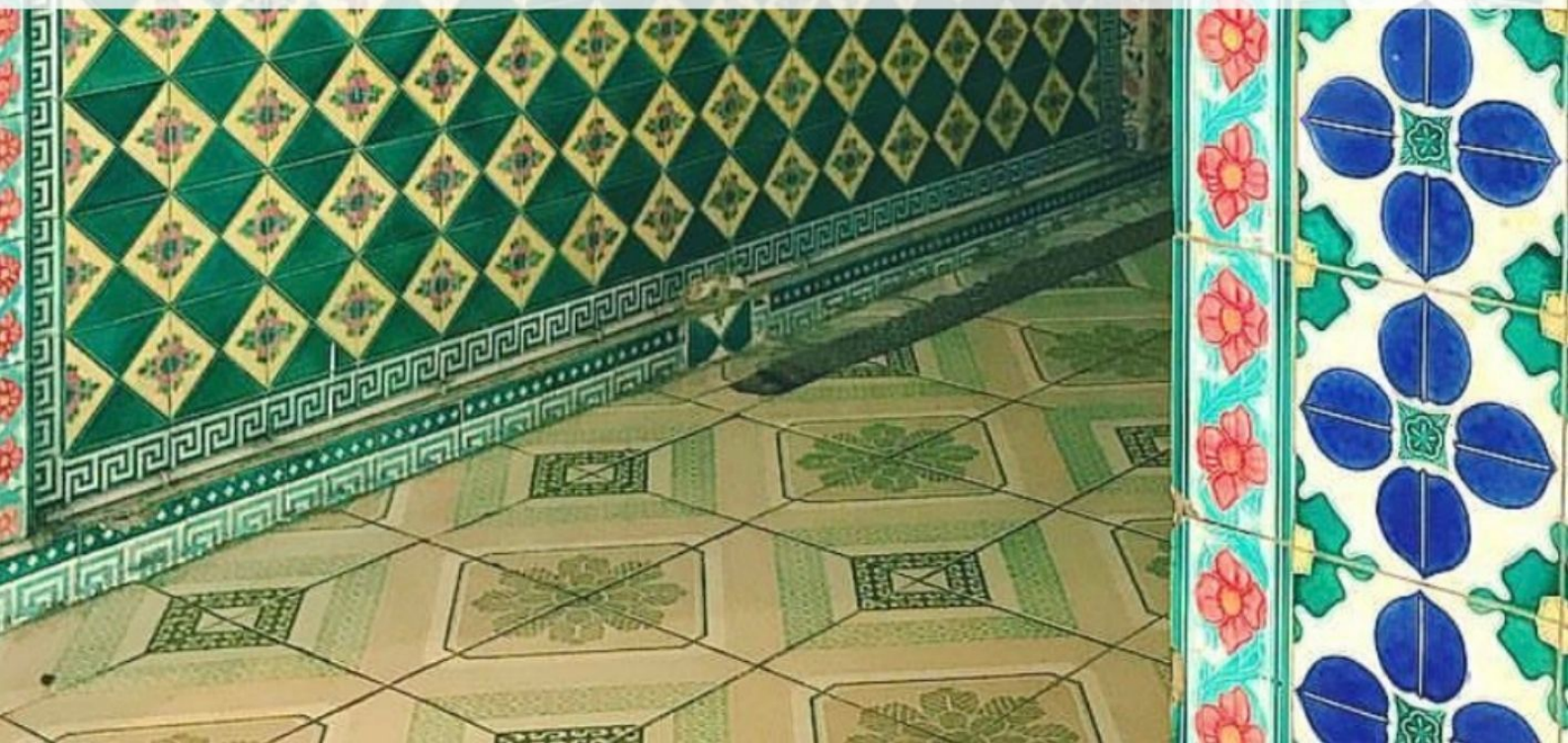


MAJOLICA TILES

# THE UNTOLD HISTORY

Our antique tile collections are handpicked from antique collectors all over the world. These vintage ceramic tiles were produced in Japan, England, Belgium and Germany between the 1890s to 1930s and can no longer be produced.

Each tile you see is at least 90 years old, survived the World wars, building demolitions and has travelled at least half of the earth to reach you.





# FLORAL TILE PATTERNS

---

Plants are regarded as the mother of nature, which nurtures all living things, especially in the daily life of human beings. In particular, flower plants have beautiful shapes, colourful colours and elegant characteristics. The flower shape and colour view are pleasing to the eye and have been regarded as a symbol of beauty since ancient times. It shines brightly, and at the same time endows it with symbolic meanings such as character and morality. Therefore, in traditional architectural decoration, auspicious patterns made of flowers are also widely used to represent wishes and aspirations for a happy life.

The shape of flowers and plants is changeable, which makes the design of tiles more diverse, especially the geometric patterns present a more beautifying effect. There are countless flowers and vines with common tile patterns, such as beautiful and rich peony; "periwinkle" with a long flowering period, rose; proud frost and unyielding autumn chrysanthemum; elegant and elegant narcissus; Dyed mint; orchid with the fragrance of the king; Hemerocallis (Golden needle flower) with the meaning of forgetting worries and suitable for men; Ganoderma lucidum for prolonging life: there is a metaphor of "announcement of good news", plum blossoms that are not afraid of ice and snow, etc.

In addition to a single flower pattern, there are also tile patterns composed of several plants. The most common is the "Plum, Orchid, Bamboo and Chrysanthemum", which is known as the "Four Gentlemen of Flowers", which represents a clean, elegant and otherworldly character. In addition, the traditional auspicious tangled branches based on vines and curly grass are based on ivy, Fufang vine, wisteria, honeysuckle, Lingxiao, grapes and other vines as prototypes. This kind of tangled branch pattern, also known as "wanshou vine", not only has the graceful beauty of interspersed branches and vines but also has the auspicious meaning of endless growth and prosperity. It is a widely used tile pattern.



# TODAY'S USAGE

## FURNITURE





# TODAY'S USAGE

## ART WORK





# WALL TILES

152 x 152 mm. Prices are per tile/set.

## FLORAL COLLECTION



F001

Qty: 3 Rs. 2000/-



F002

Qty: 1 Rs. 2000/-



F003

Qty: 1 Rs. 2000/-



F004



F005

Qty: 2 Rs. 2000/-



F006

Qty: 4 Rs. 2000/-



F007



F008



F009

Qty: 1 Rs. 2000/-



F010



F011



F012

Qty: 1 Rs. 2000/-





F013



F014

Qty: 1 Rs. 2000/-



F015



F016



F017

Qty: 1 Rs. 2800/-



F018



F019

Qty: 20 Rs. 2800/-



F020

Qty: 25 Rs. 2800/-



F021

Qty: 7 Rs. 2800/-



F022

Qty: 14 Rs. 2800/-



F023



F024



F025

Qty: 1 Rs. 2800/-



F026



F027



F028

Qty: 1 Rs. 2000/-





F029



F030



F031

Qty: 3 Rs. 2000/-



F032



F033



F034

Qty: 2 Rs. 2000/-



F035



F036

Qty: 1 Rs. 2000/-



F037



F038



F039



F040



F041

Qty: 8 Rs. 2000/-



F042

Qty: 17 Rs. 2000/-



F043

Qty: 6 Rs. 2000/-



F044

Qty: 1 Rs. 2000/-





F045



F046

Qty: 1 Rs. 2000/-



F047

Qty: 2 Rs. 2000/-



F048

Qty: 1 Rs. 2000/-



F049

Qty: 1 Rs. 2000/-



F050

Qty: 1 Rs. 2000/-



F051



F052



F053



F054



F055

Qty: 1 Rs. 2000/-



F056

Qty: 2 Rs. 2000/-



F057



F058



F059

Qty: 1 Rs. 2000/-



F060

Qty: 3 Rs. 2000/-





F061

Qty: 2 Rs. 2000/-



F062

Qty: 3 Rs. 2000/-



F063



F064



F065

Qty: 1 Rs. 2000/-



F066

Qty: 1 Rs. 2000/-



F067



F068



F069



F070

Qty: 2 Rs. 2000/-



F071

Qty: 3 Rs. 2000/-



F072



F073



F074



F075



F076

Qty: 1 Rs. 2000/-





F077

Qty: 1 Rs. 2000/-



F078

Qty: 1 Rs. 3000/-



F079



F080



F081

Qty: 1 Rs. 2000/-



F082

Qty: 2 Rs. 2000/-



F083



F084



F085



F086

Qty: 1 Rs. 2000/-



F087

Qty: 5 Rs. 2000/-



F088

Qty: 1 Rs. 2000/-



F089

Qty: 1 Rs. 2000/-



F090

Qty: 1 Rs. 2000/-



F091





F092

Qty: 2 Rs. 2000/-



F093

Qty: 1 Rs. 2000/-



F094



F095



F096

Qty: 1 Rs. 2000/-



F097

Qty: 3 Rs. 2000/-



F098



F099

Qty: 4 Rs. 4500/-



F100



F101



F102



F103



F104

Qty: 7 Rs. 2800/-



F105

Qty: 2 Rs. 5000/-



F106

Qty: 2 Rs. 3000/-



F107





F108



F109

Qty: 2 Rs. 2000/-



F110

Qty: 2 Rs. 2000/-



F111

Qty: 1 Rs. 2000/-



F112

Qty: 2 Rs. 2000/-



F113

Qty: 2 Rs. 2000/-



F114

Qty: 2 Rs. 2000/-



F115



F116

Qty: 6 Rs. 2000/-



F117



F118

Qty: 3 Rs. 2000/-



F119

Qty: 1 Rs. 2000/-



F120

Qty: 1 Rs. 2000/-



F121

Qty: 8 Rs. 2800/-



F122

Qty: 5 Rs. 2800/-



F123

Qty: 1 Rs. 2000/-





F124

Qty: 1 Rs. 2000/-



# ABSTRACT COLLECTION



A001



A002

Qty: 4 Rs. 2000/-



A003



A004

Qty: 1 Rs. 2000/-



A005

Qty: 1 Rs. 2000/-



A006

Qty: 3 Rs. 2000/-



A007



A008

Qty: 1 Rs. 2000/-



# SPECIALITY COLLECTION



This peacock couple tile represents harmony between a married couple.

Peacock Symbolism: Vision, Self Expression, Spirituality, Awakening, Integrity, Freedom, Guidance, Protection, Watchfulness & Wealth, Peacock's energy can help you on your spiritual path and breathe new life into your walk of faith.

Qing officials even used peacock flower feathers to represent "rank and power"



S001 Qty: 2  
760 x 304 mm

Price on request

S002  
Qty: 1 Rs. 5000/-

Exception: Made by PPW in India



# SPECIALITY COLLECTION



*S001\_Reproduction*

Qty: 2 sets

760 x 304 mm

Rs. 45,000 per 10-tile set





S003



S004



S005



S006

Qty: 3 Rs. 4500/-



S007



S008

Qty: 1 Rs. 4500/-

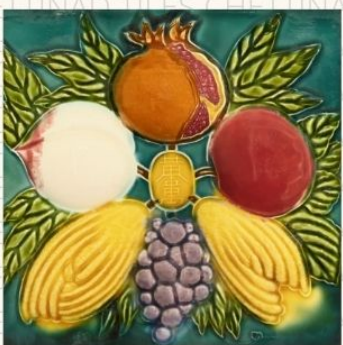
Qty: 2 Rs. 4500/-

## FRUIT TILE PATTERNS

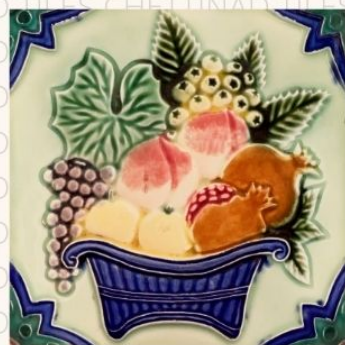
Fruits symbolize harvest, additionally, each piece of fruit Ancient Tile has the implication of a blessing, so they were appreciated by the agricultural society at that time.

A piece of ton-of gold Ancient Tile has the implication of multiple blessing including wealth, peace, longevity, fortune and thousands of offspring and descendants.

Pomegranate and grape symbolises thousands of offspring and descendants. A ton of gold symbolizes wealth. An apple symbolizes peace. A Peach symbolizes longevity. Bergamot is a blessing of auspiciousness



S009



S010



S011



S012

Qty: 1 Rs. 4500/-

Qty: 5 Rs. 4500/-





S013



S014



S015



S016



S017



S018



S019



S020



S021

Qty: 1 Rs. 6000/-



S022

Qty: 2 Rs. 6000/-



# RARE AND SPECIAL TILES



**SOLD OUT**

304 x 152 mm  
RS001



**SOLD OUT**

RS002



**SOLD OUT**

RS003



**SOLD OUT**

RS004



**SOLD OUT**

RS005



**SOLD OUT**

RS006



**SOLD OUT**

RS007



**SOLD OUT**

RS008  
Qty: 1 Rs. 15000/-



**SOLD OUT**

RS009



RS010

Qty: 1 Rs. 10000/-



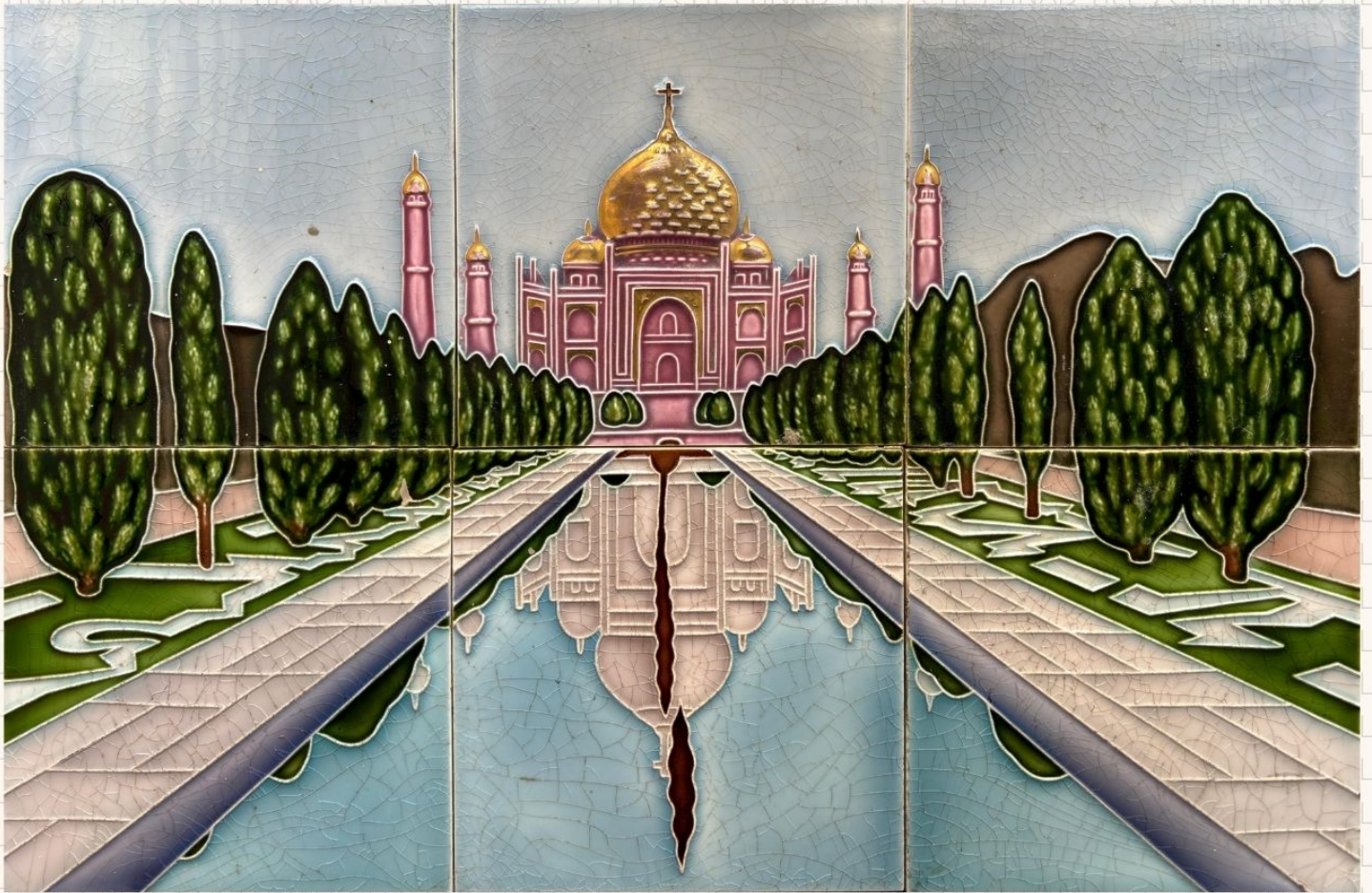
RS011  
Qty: 2 Rs. 5000/-



**SOLD OUT**

RS012





RS013  
 Qty: 1  
 Price on request



RS014



RS015  
 Qty: 1 Rs. 15000/-



RS016







RS017

Qty: 1 Rs. 30,000/-



# BORDER TILES

76 x 152 mm

Priced at Rs. 1000 each



B001  
Qty: 1



B002  
Qty: 2



B003



B004



B005



B006



B007  
Qty: 4



B008  
Qty: 2



B009  
Qty: 2



B010  
Qty: 6



B011  
Qty: 2



B012



B013  
Qty: 4



B014  
Qty: 5



B015



B016  
Qty: 9



B017  
Qty: 13



B018  
Qty: 3



B019



B020



B021  
Qty: 3



B022



B023



B024  
Qty: 1





B025  
Qty: 4



B026  
Qty: 4



# MYTHOLOGY COLLECTION

The Japanese were aware about the demand of Majolica tiles in the Indian subcontinent which was imported from England during the late 1800s. After learning the technique from the English, they innovated with Hindu Gods on tiles (most of the inspiration was drawn from **Raja Ravi Varma's** lithographs) which became an instant hit during the 1920s.

For patrons of Indian Art, the name Raja Ravi Varma has been familiar for more than a century. A depiction of the civilization of classical times, Ravi Varma's style of painting played a foundational role in defining Indian imagery and left behind a brilliant legacy of academic realism.

Today, you can spot these God tiles inside ancient temples including the Kashi Vishwanath temple-Varanasi, Hanuman mandir-Allahabad, Mahakaleshwar Jyotirlinga-Ujjain & various other temples & homes in the Rajasthan, Mathura, Jaunpur, Kolkata & other towns. One of the most extensive usage of these tiles can be seen in Shri Swaminarayan Mandir-Junagadh.



M001



Raja Ravi Varma's Lithograph





M002

Qty: 1

Price on request

456 x 304 mm



Raja Ravi Varma's Lithograph



M003



M004





M005 Price on request

456 x 304 mm



Raja Ravi Varma's Lithograph



M006





Raja Ravi Varma's Lithograph



M007

Qty: 1 Rs. 4500/-



M008

Qty: 2 Rs. 4500/-



M009

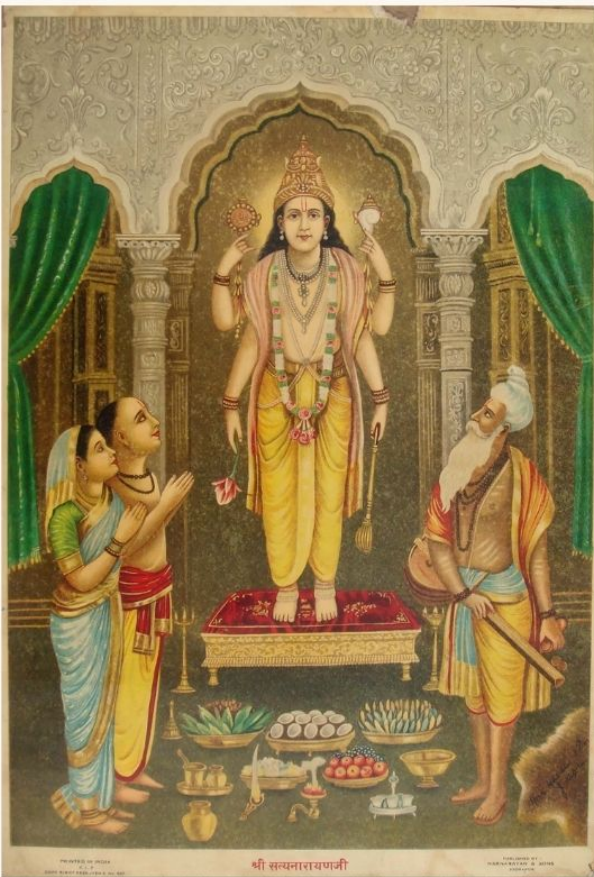




M010

608 x 456 mm

Price on request



Shri Satya Narayan Ji Lithograph  
published by Harnaryan & Sons,  
Jodhpur.



M012 Price on request

456 x 304 mm

M011

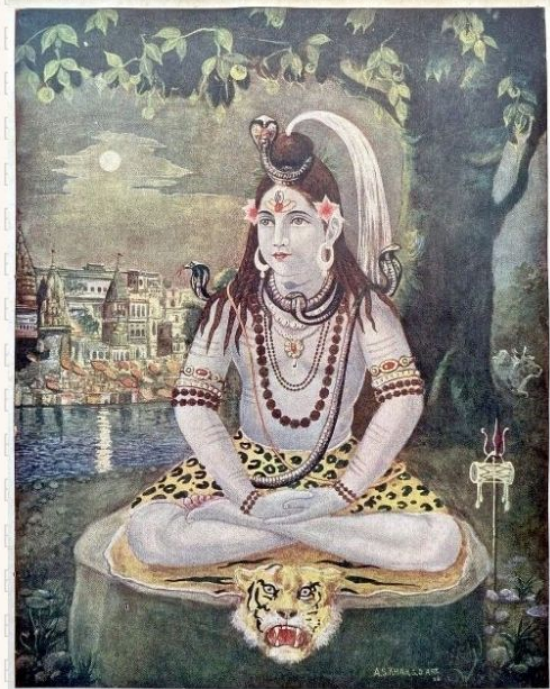


Qty: 1 Rs. 6000/-



M013

304 x 152 mm



हरिहरनाथ

HARIHARNATH.

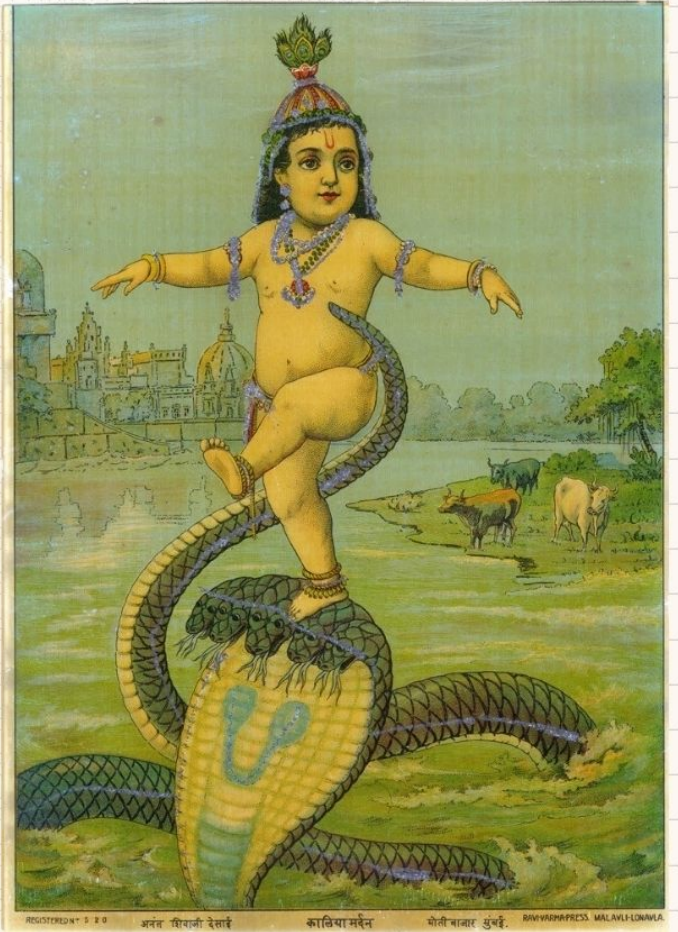
हरिहरनाथ





M014

456 x 304 mm



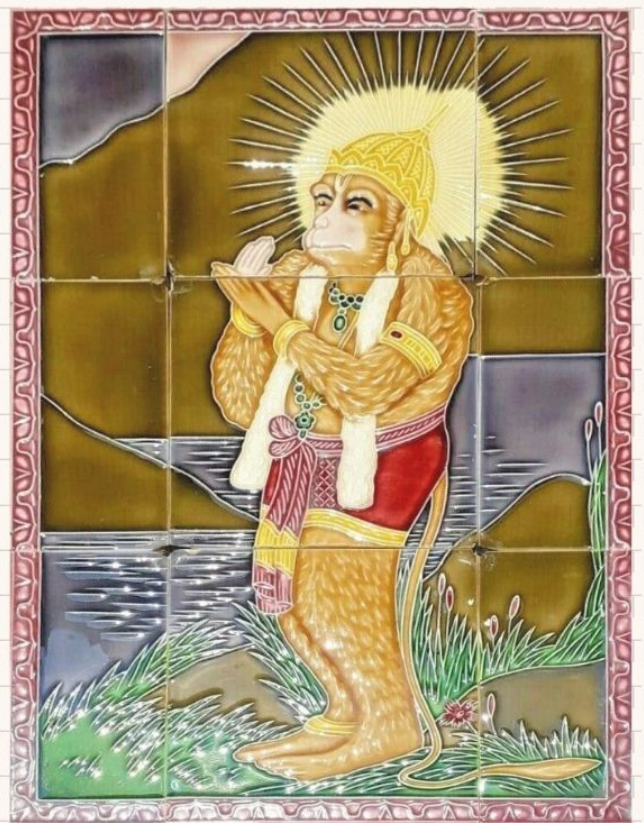
Kalia Mardhan

Raja-Ravi Varma's Lithograph



M015

456 x 304 mm



M016

456 x 304 mm

Price on request





M017

Qty: 1 Rs. 20000/-

304 x 152 mm



Raja Ravi Varma's Lithograph



M018

Qty: 1 Rs. 20000/-



Shri Vasudeo

by artist M V Dhurandhar





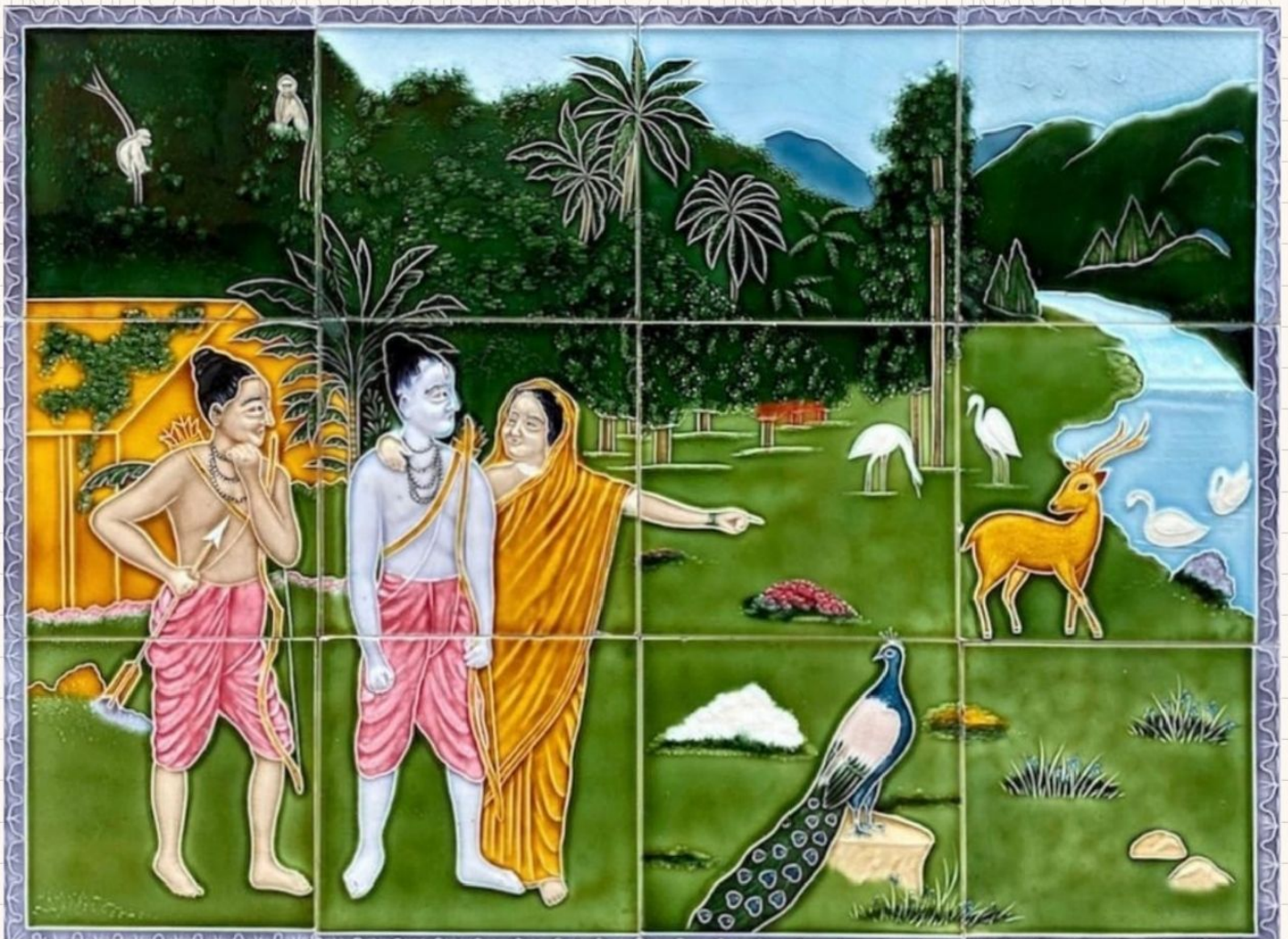
M019

Qty: 1 Rs. 4500/-



M020

Qty: 1 Rs. 4500/-



M021

Price on request





M022





# Chettinad Tiles

Chettinadu | Chennai



+91 98401 53476 | +91 97909 57421 | +91 98659 98071



Chettinad\_tiles



Chettinad tiles

